



**SOURCE
FOR STREAM**

2026
Conference

Canada's Premier
Stormwater and Erosion
and Sediment Control
Conference

Thank you to our sponsors!

EXECUTIVE SPONSORS



MEDIA SPONSORS



HOSTS

Presented by:



In association with:




Source to Stream 2026

Hatzic Emergency Works Program – Legace Creek

Presenters:

Jeff Bridge and Tyler Dilley
Milestone Environmental Contracting





Milestone Environmental Contracting Inc. is a leading Canadian environmental contractor specializing in environmental remediation and providing solutions for all remediation needs from coast to coast to coast. Our success hinges on our ability to efficiently assemble the most qualified project teams to manage our clients' environmental liabilities and provide a clean bill of health to each project we touch.



Locations

◆ *Downtown Toronto (new)



Indigenous Engagement & Inclusion

60+ % of Portfolio

- ◆ Over \$10 million in economic reconciliation
- ◆ Projects
- ◆ Programs
- ◆ Facility Operations
- ◆ Training
- ◆ Employment
- ◆ Goods & Services
- ◆ Community Benefits
- ◆ Long-term Capacity Building

Respect & Recognition
Community Investment
Lasting Relationships

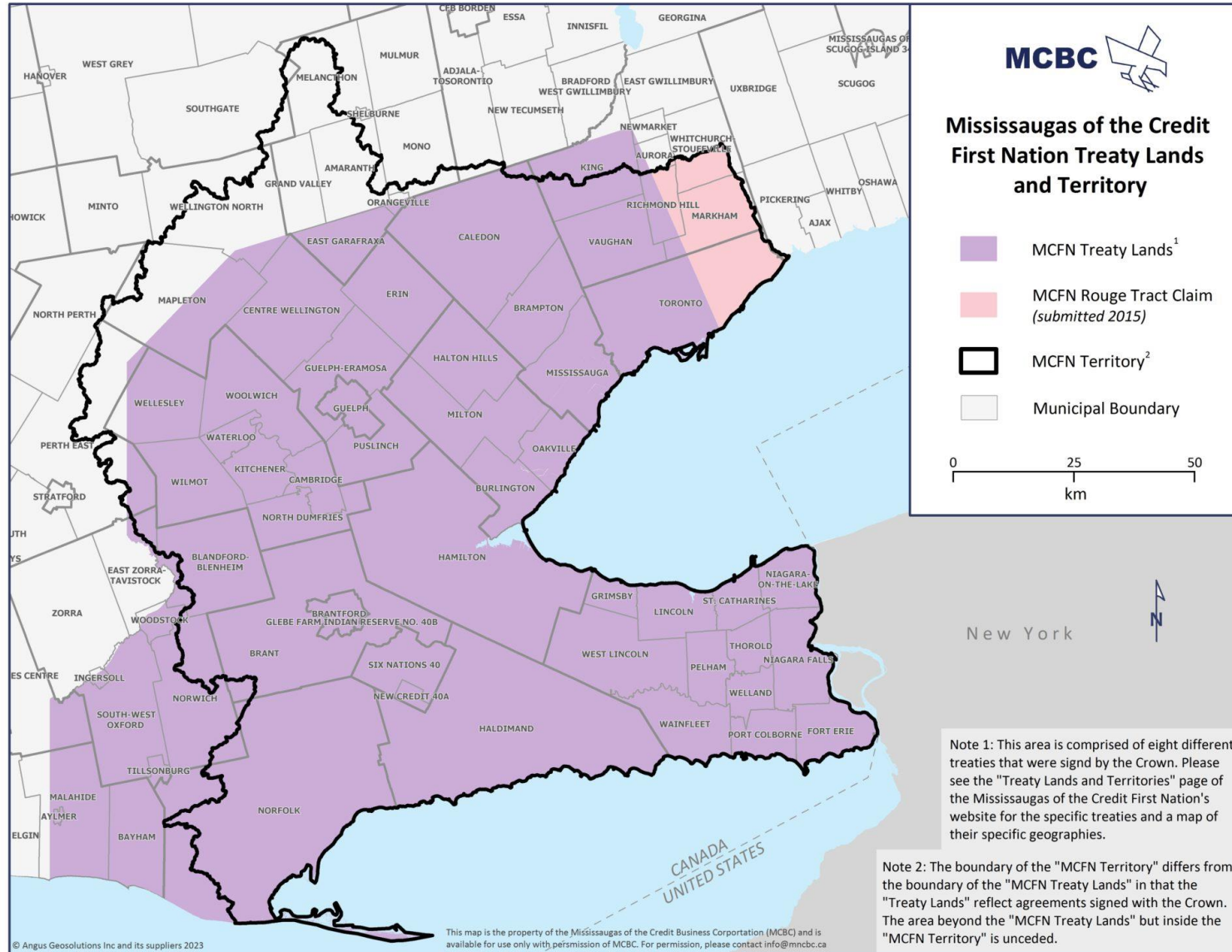


MCBC Milestone

Environmental Remediation LP

- ◆ Indigenous majority-owned partnership that creates meaningful economic and employment opportunities for Indigenous communities
 - ◆ Not only aligns with government and corporate procurement goals that prioritize Indigenous participation but demonstrates a genuine commitment to reconciliation, not just compliance with policy
- ◆ MCBCMER leverages Milestone's established systems, experience, and resources, offering:
 - ◆ End-to-end remediation services, including risk assessment, engineering support, excavation, treatment, and restoration
 - ◆ Collaborative project management, with transparency and stakeholder engagement at its core
 - ◆ A track record of successful delivery on complex, high-risk remediation projects in remote and sensitive environments

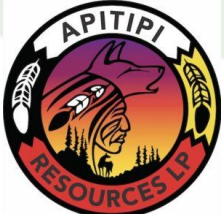


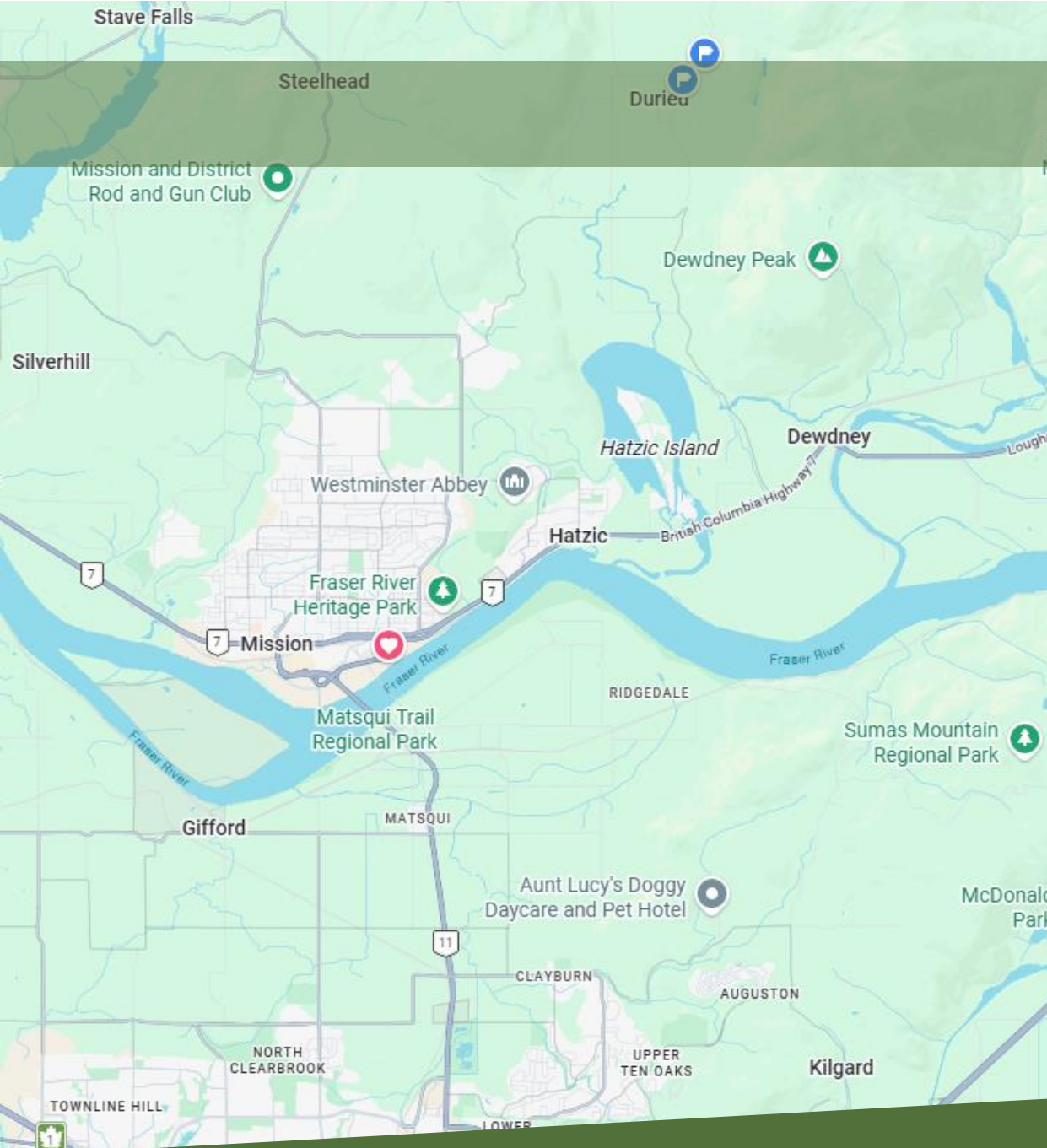


Indigenous Partnerships



Tse Cho Enterprises





Legace Creek

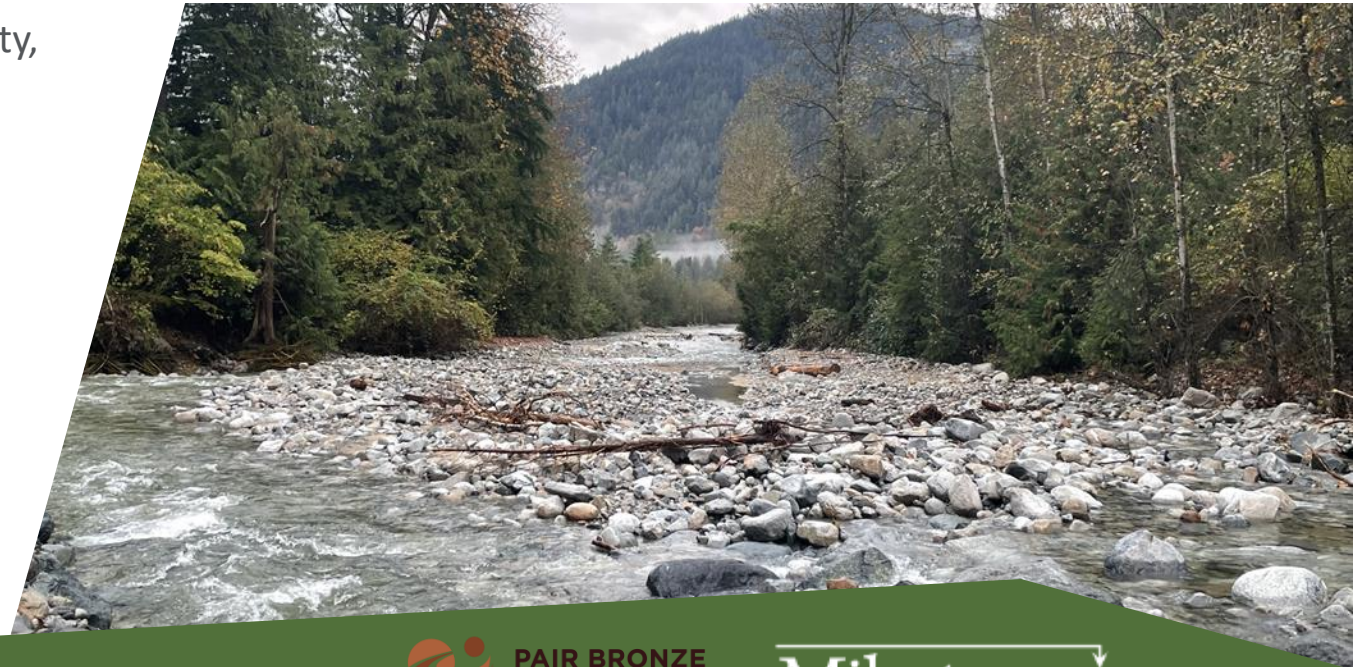


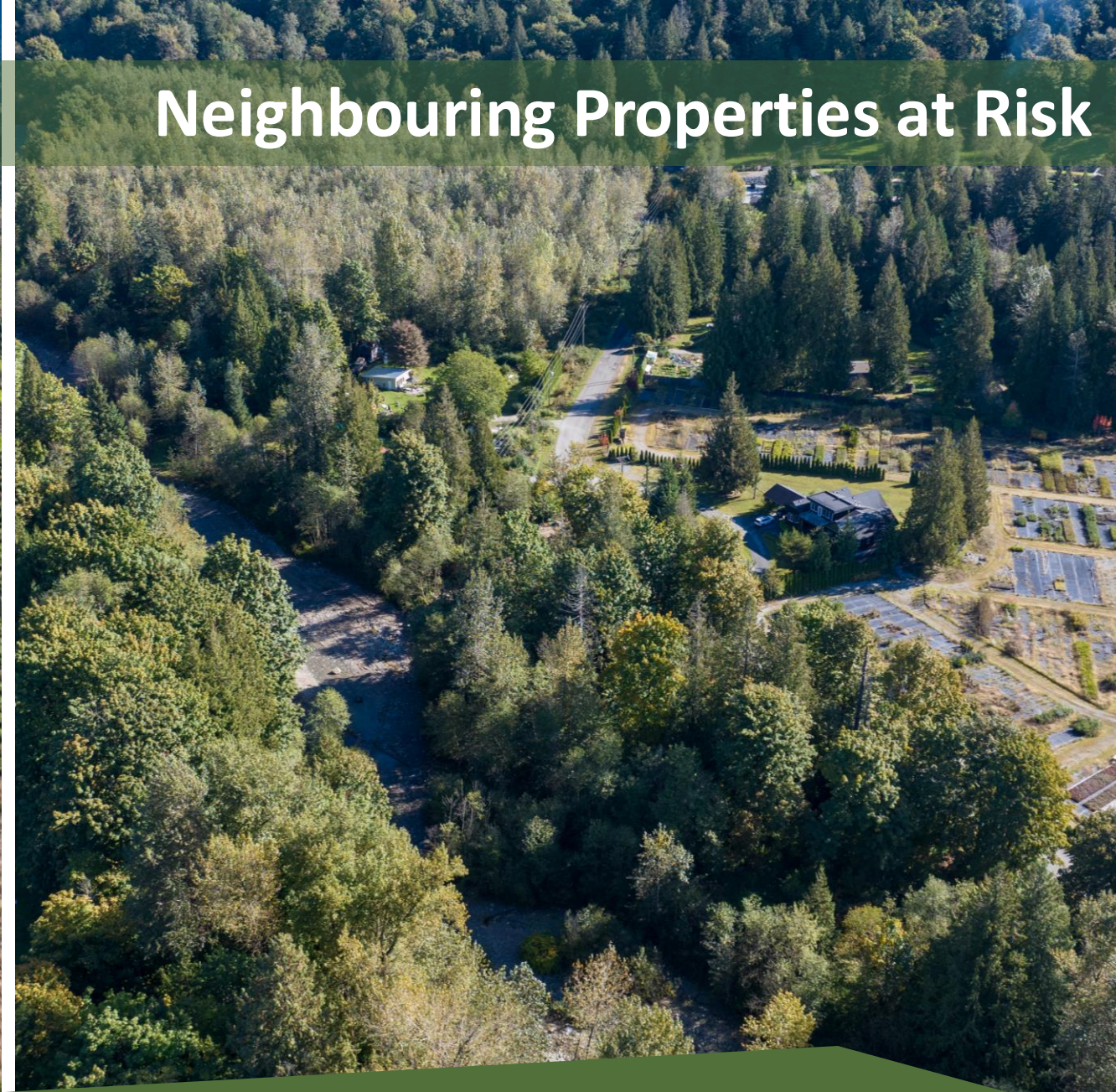
Sumas Prairie 2021



Hatzic – Lagace Creek

- ◆ Clearing 1.5 hectares that included the removal and disposal of invasive knotweed, black berry
- ◆ 46,000+ tonnes of gravel and sediment removed to allow for safe passage of fish
- ◆ Daming and bypass pumping the creek so that fish salvage could be conducted
- ◆ Replanting of planting of over 2,500 native plant species
- ◆ Despite an atmospheric river event during construction activity, protection of watercourses, habitats, and cultural landmarks achieved through site-specific safeguards



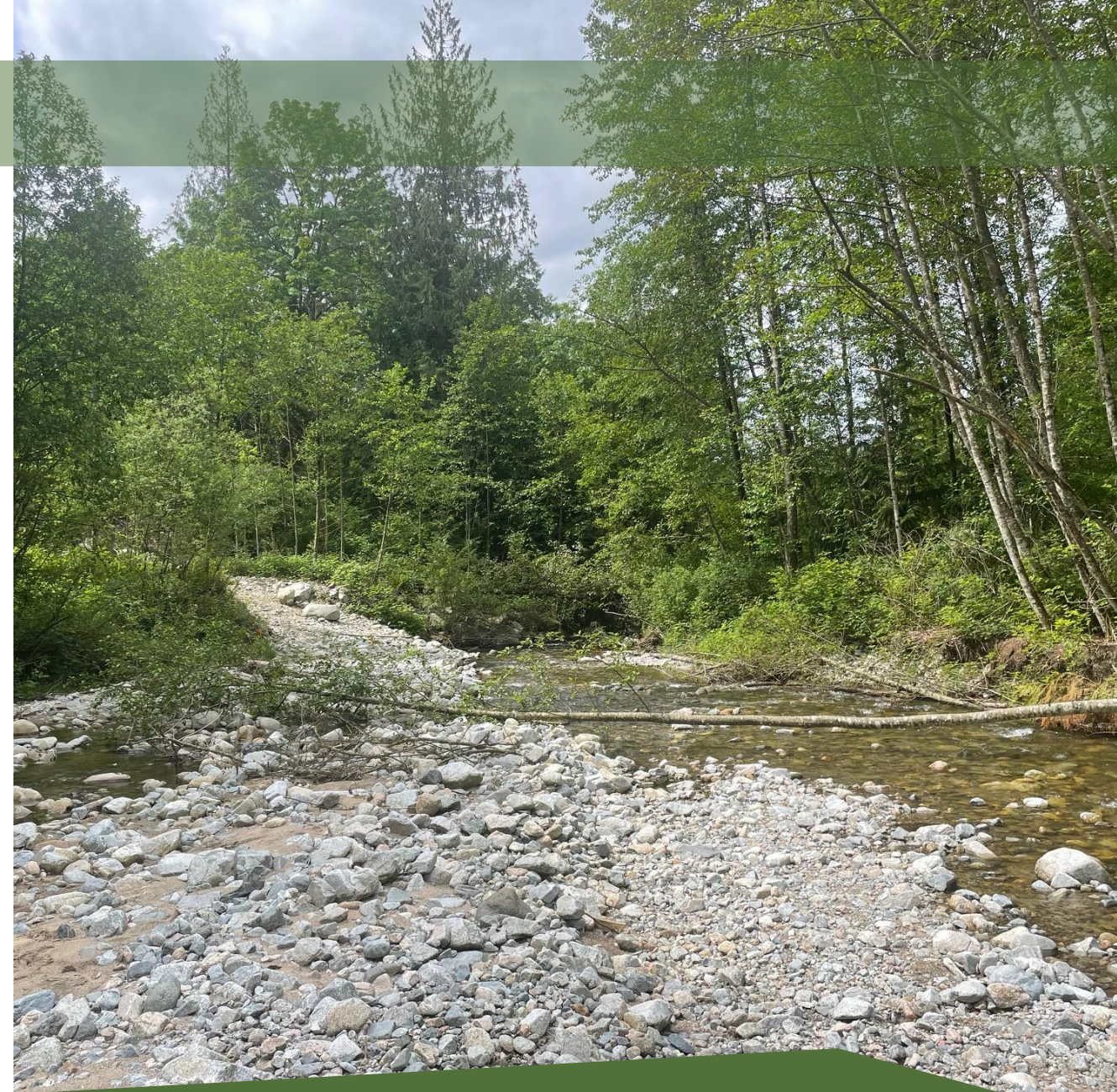


Neighbouring Properties at Risk

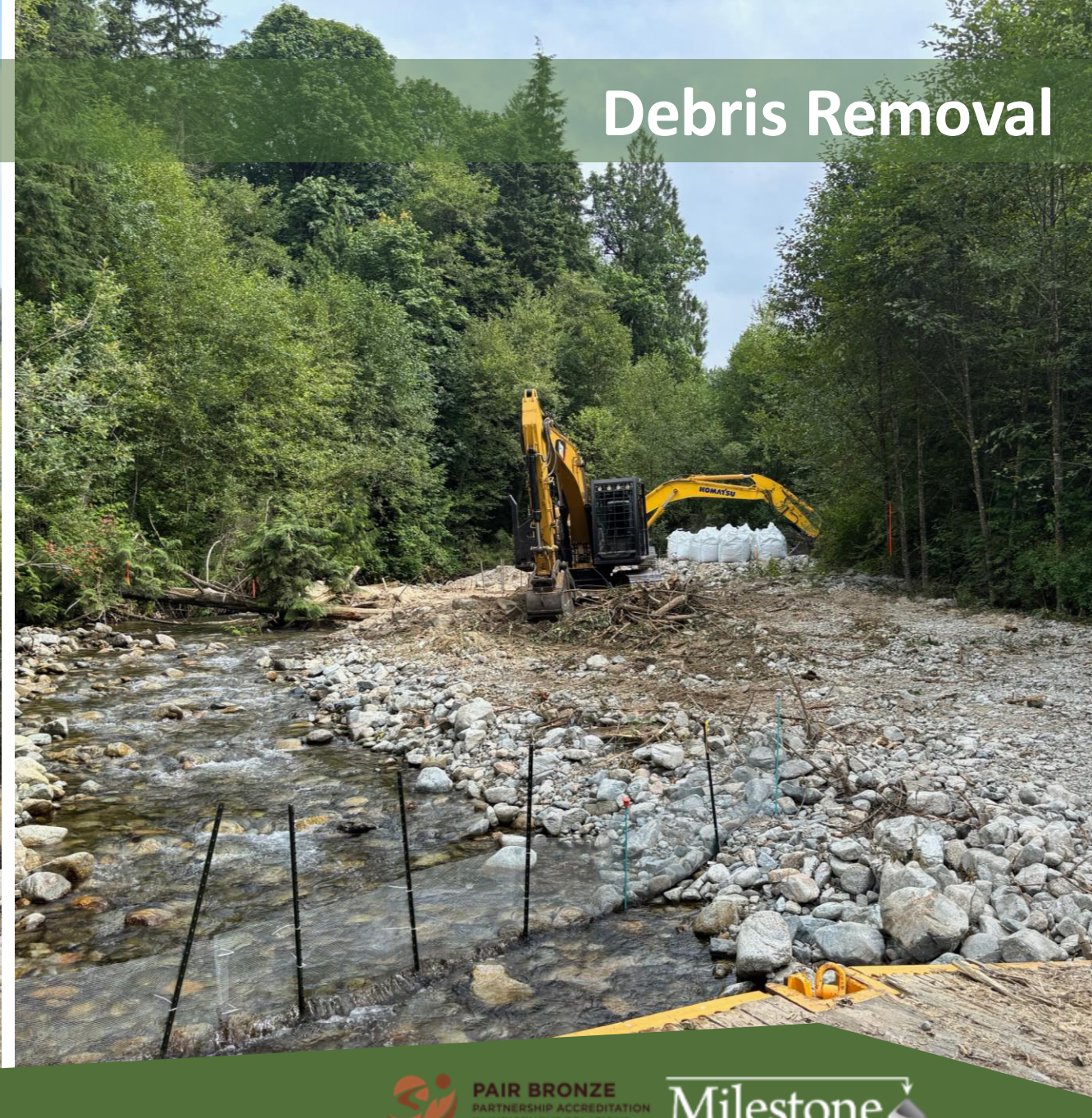
Legace Creek - Pre Construction



Legace Creek – Pre Construction



Debris Removal



Fish Salvage



Dewatering



Sediment Removal and Instream Works



Riffle Lining



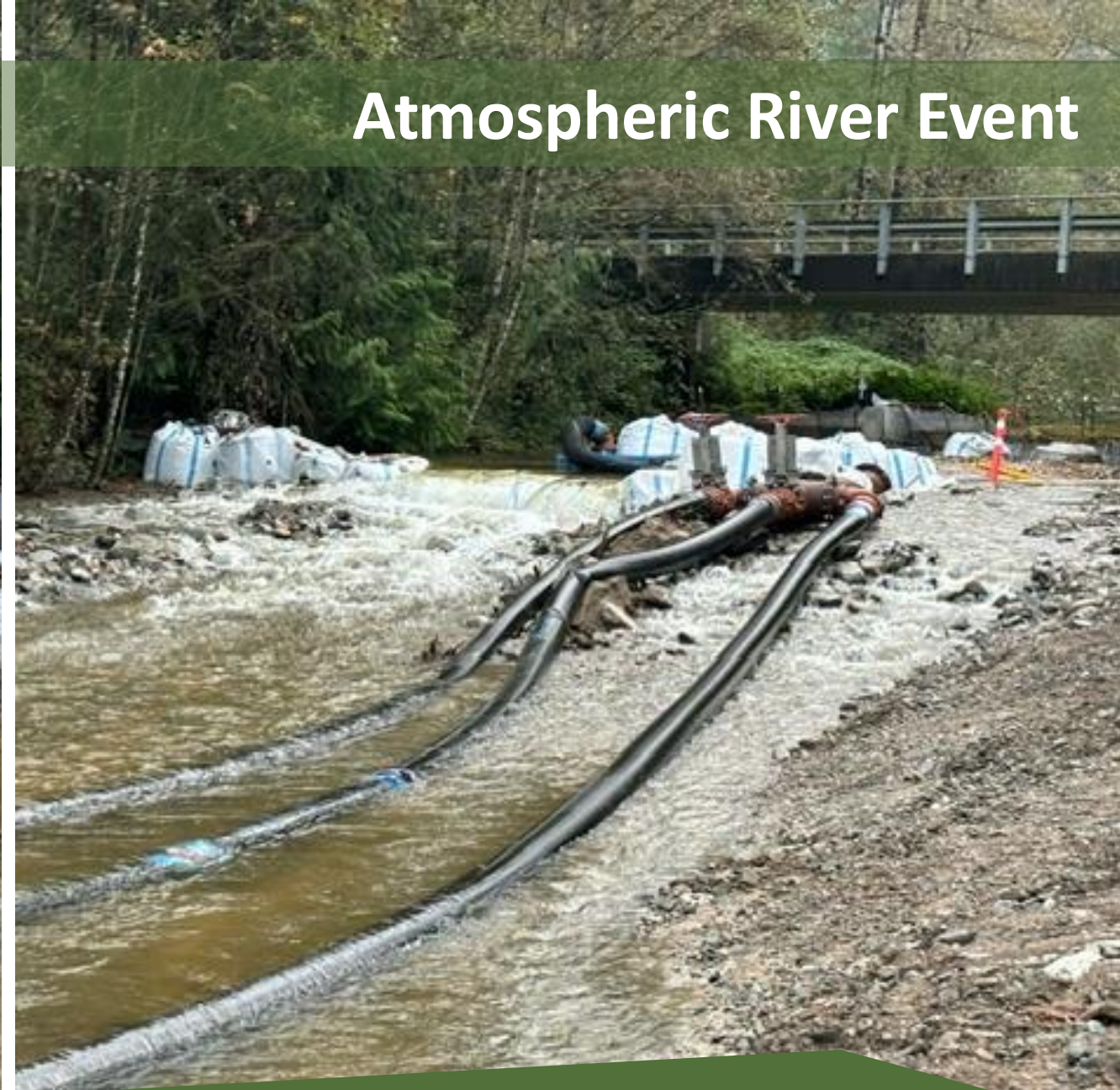
Bioengineering



Habitat Restoration



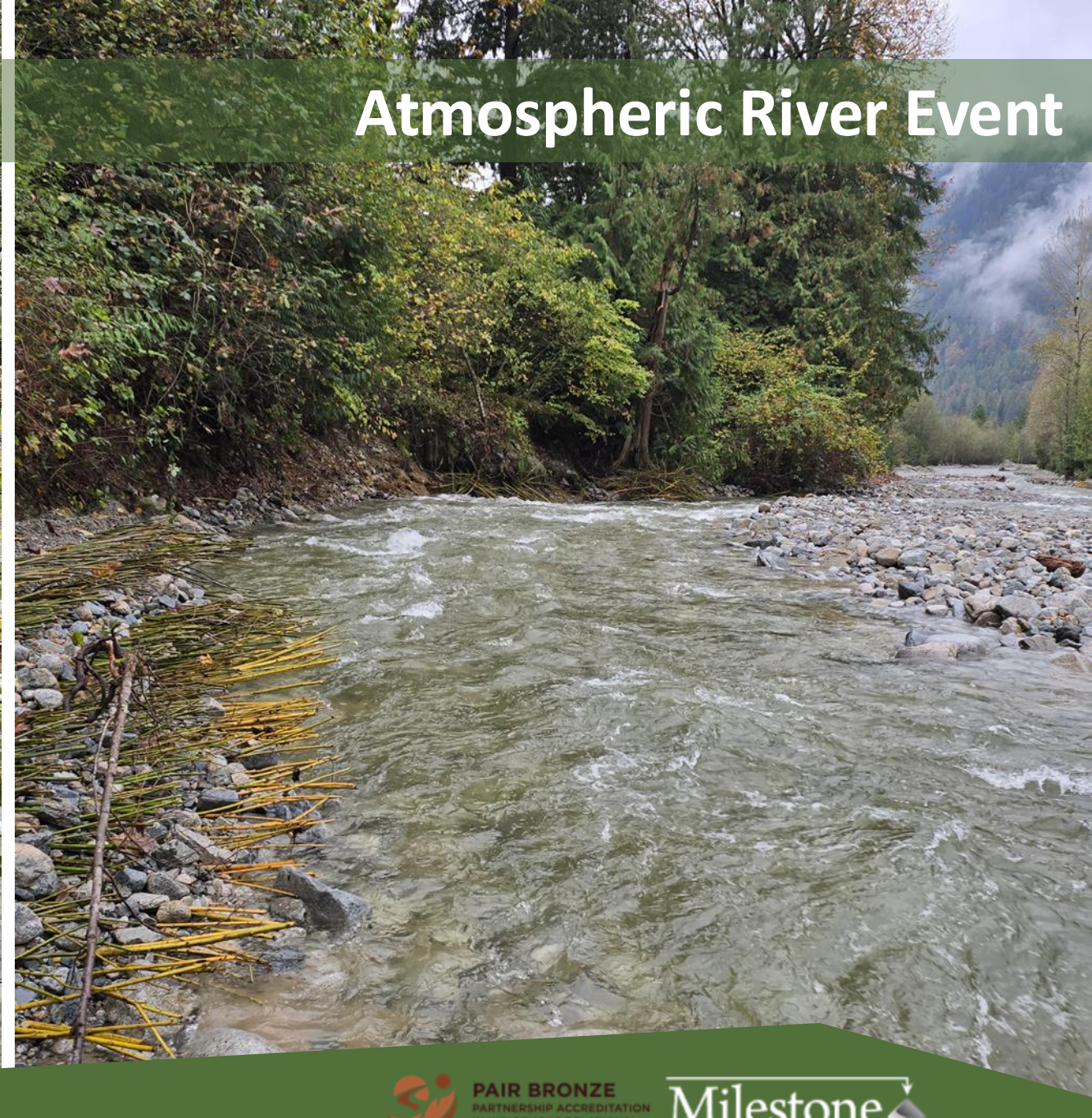
Atmospheric River Event



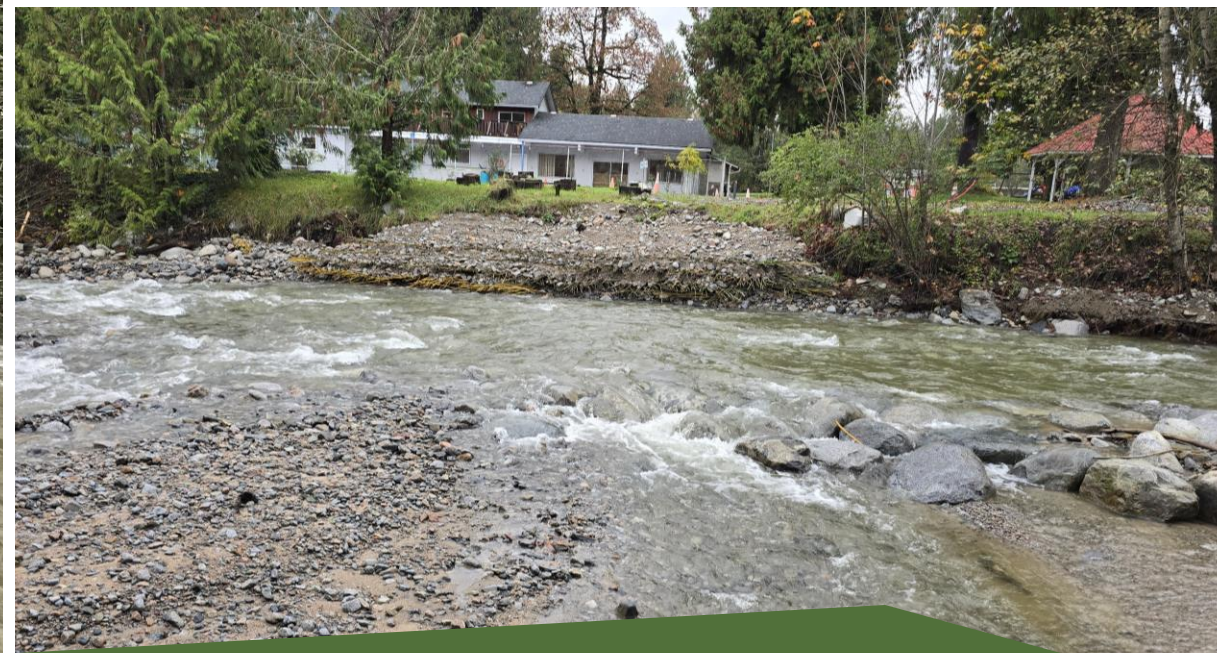
Atmospheric River Event



Atmospheric River Event



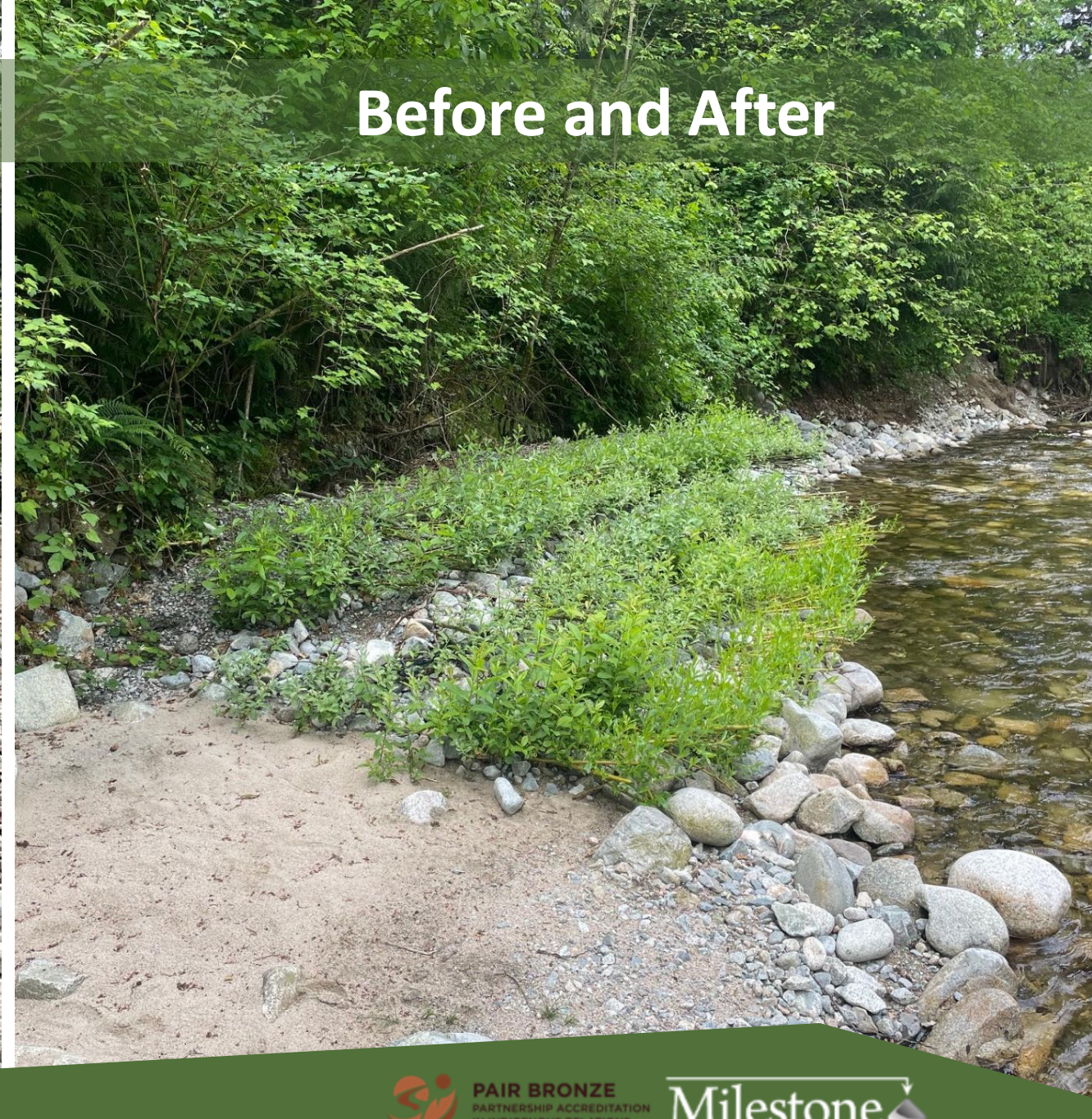
Atmospheric River Event



Post Flood Conditions



Before and After



Post Flood Conditions



Lessons Learned





**SOURCE
FOR STREAM**

2026
Conference

Canada's Premier
Stormwater and Erosion
and Sediment Control
Conference

Thank you to our sponsors!

EXECUTIVE SPONSORS



MEDIA SPONSORS



HOSTS

Presented by:



In association with:

